

ø0,25" - ø1,5"  
ø6 - ø40 mm

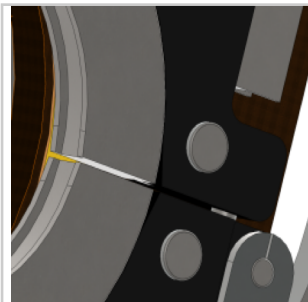


## Technical Specifications

- **Water-cooled head**
- Dual-wing opening
- Clamping jaws - **stainless** steel (1 kit per diameter)
- Tungsten electrode specific to diameter
- Motor with coder: **allows for tungsten electrode start-up at all angles**
- **High protection** against start-up without tungsten electrode

**Weight:** 8.8 kg

- All machines are delivered in their individual case



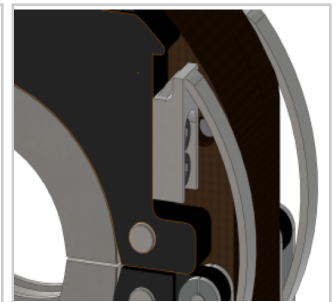
Tool-free jaw fitting



Remote control keypad



Driven by AXXAIR power source ( cf compatibility table )



Adjustable spring- loaded system: to account for tube "out of round"

References	Accessories	Consumables
SATF-40ND	SAFS-210 : Wire harness extension 10 M SMN40-XX Clamping jaws Ø in mm	SCE16-XX : Ø 1,6 mm SCE24-XX : Ø 2,4 mm

